

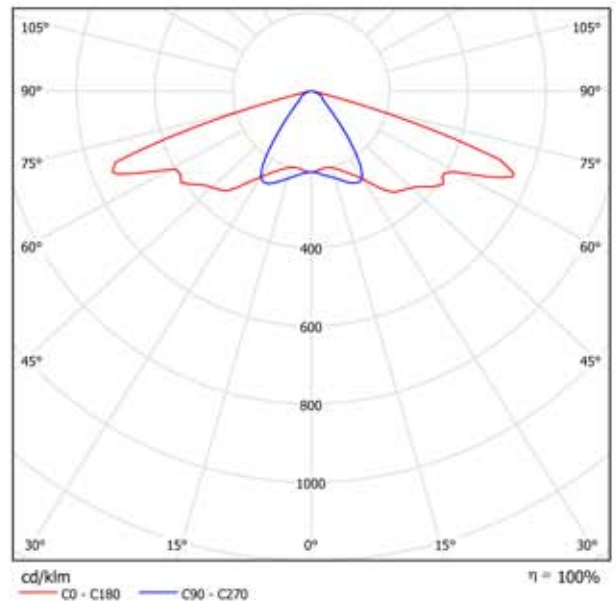


LTILED.COM  
NORTH AMERICA  
KS DISTRIBUTOR

## Database version IES95 2008-06-30 LTI-KA084T4 / Luminaire Data Sheet

See our luminaire catalog for an image of the luminaire.

### Luminous emittance 1:



Luminaire classification according to CIE: 100  
CIE flux code: 39 74 97 100 99

Due to missing symmetry properties, no UGR table can be displayed for this luminaire.

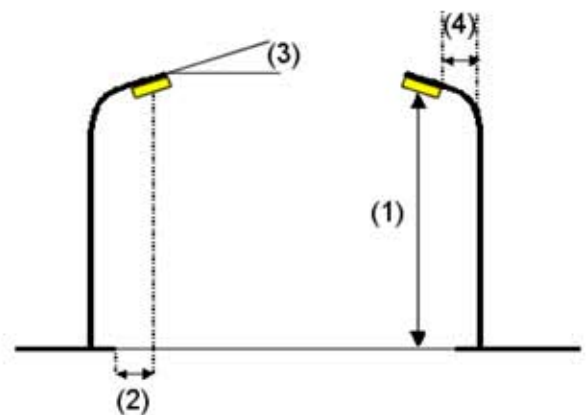
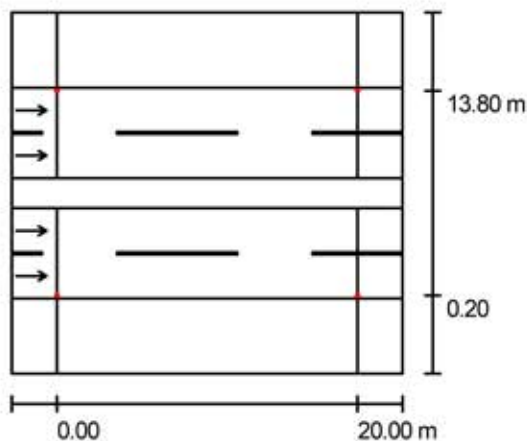
## Street 1 / Planning data

## Street Profile

Sidewalk 2	(Width: 5.000 m)
Roadway 2	(Width: 6.000 m, Number of lanes: 2, tarmac: R1, q0: 0.100)
Median 1	(Width: 2.000 m, Height: 0.000 m)
Roadway 1	(Width: 6.000 m, Number of lanes: 2, tarmac: R1, q0: 0.100)
Sidewalk 1	(Width: 5.000 m)

Maintenance factor: 0.80

## Luminaire Arrangements



Luminaire:	
Luminaire Luminous Flux:	4971 lm
Luminaire Wattage:	84.3 W
Arrangement:	Double row, opposing
Pole Distance:	20.000 m
Mounting Height (1):	8.000 m
Height above working plane:	8.000 m
Overhang (2):	0.200 m
Boom Angle (3):	10.0 °
Boom Length (4):	0.500 m

Database version IES95 2008-06-30 LTI-KA084T4

Maximum luminous intensities	
at 70° :	673 cd/klm
at 80° :	114 cd/klm
at 90° :	8.37 cd/klm

Any direction forming the specified angle from the downward vertical, with the luminaire installed for use.

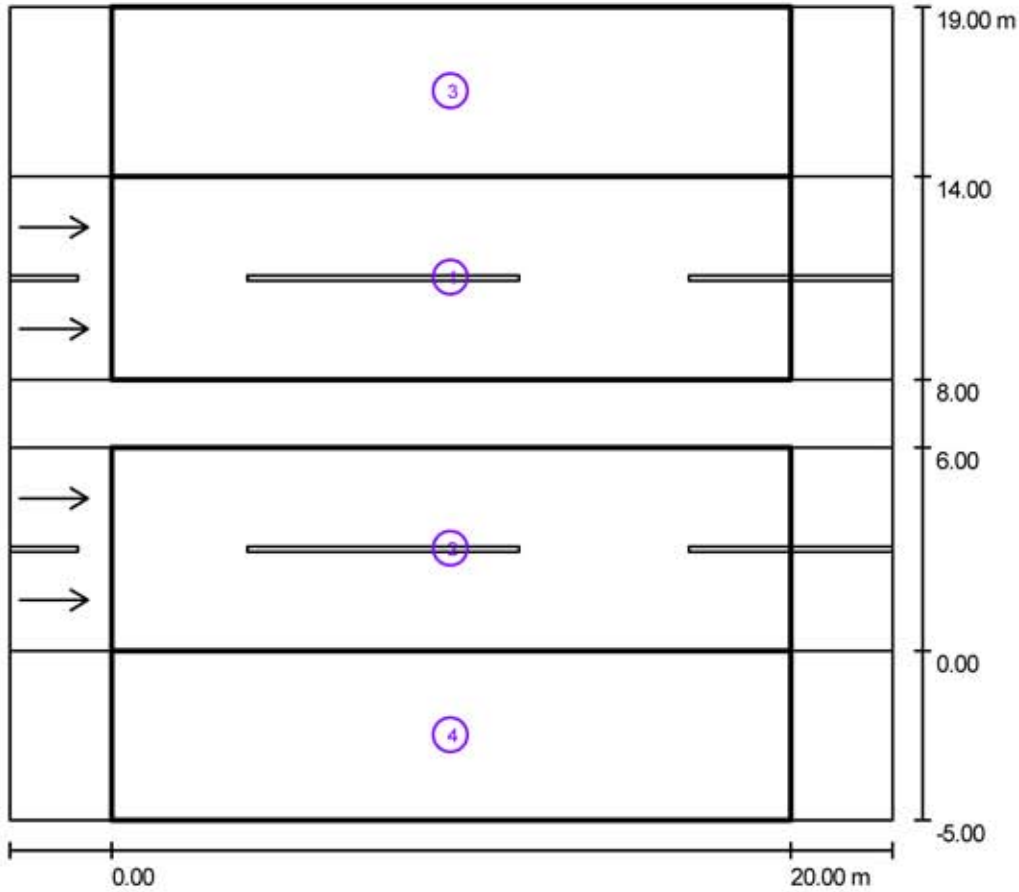
Arrangement complies with luminous intensity class G2.

Arrangement complies with glare index class D.6.



LTILED.COM  
NORTH AMERICA  
KS DISTRIBUTOR

Street 1 / Photometric Results



Maintenance factor: 0.80

Scale 1:223

Calculation Field List

- 1 Valuation Field Roadway 2  
Length: 20.000 m, Width: 6.000 m  
Grid: 10 x 6 Points  
Accompanying Street Elements: Roadway 2.  
tarmac: R1, q0: 0.100  
Selected Lighting Class: ME2

(All lighting performance requirements are met.)

	$L_{av}$ [cd/m <sup>2</sup> ]	U0	UI	TI [%]	SR
Calculated values:	1.6	0.9	0.9	7	1.1
Required values according to class:	$\geq 1.5$	$\geq 0.4$	$\geq 0.7$	$\leq 10$	$\geq 0.5$
Fulfilled/Not fulfilled:	✓	✓	✓	✓	✓



LTILED.COM  
NORTH AMERICA  
KS DISTRIBUTOR

**Street 1 / Photometric Results**

**Calculation Field List**

- 2 Valuation Field Roadway 1  
Length: 20.000 m, Width: 6.000 m  
Grid: 10 x 6 Points  
Accompanying Street Elements: Roadway 1.  
tarmac: R1, q0: 0.100  
Selected Lighting Class: ME2

(All lighting performance requirements are met.)

	$L_{av}$ [cd/m <sup>2</sup> ]	U0	UI	TI [%]	SR
Calculated values:	1.6	0.9	0.8	7	1.1
Required values according to class:	$\geq 1.5$	$\geq 0.4$	$\geq 0.7$	$\leq 10$	$\geq 0.5$
Fulfilled/Not fulfilled:	✓	✓	✓	✓	✓

- 3 Valuation Field Sidewalk 2  
Length: 20.000 m, Width: 5.000 m  
Grid: 10 x 4 Points  
Accompanying Street Elements: Sidewalk 2.  
Selected Lighting Class: S2

(All lighting performance requirements are met.)

	$E_{av}$ [lx]	$E_{min}$ [lx]
Calculated values:	13	5
Required values according to class:	$\geq 10$	$\geq 3$
Fulfilled/Not fulfilled:	✓	✓

- 4 Valuation Field Sidewalk 1  
Length: 20.000 m, Width: 5.000 m  
Grid: 10 x 4 Points  
Accompanying Street Elements: Sidewalk 1.  
Selected Lighting Class: S2

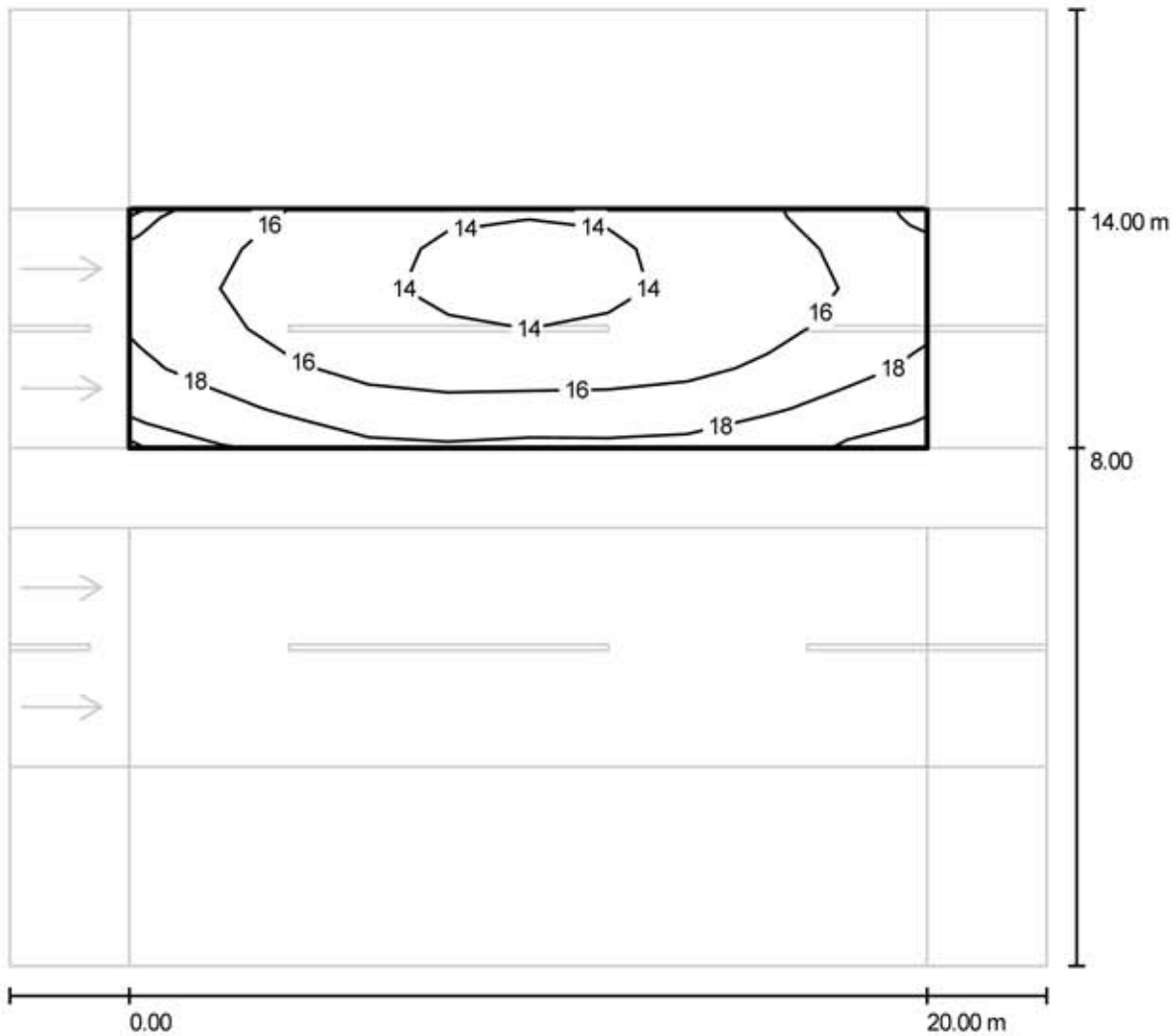
(All lighting performance requirements are met.)

	$E_{av}$ [lx]	$E_{min}$ [lx]
Calculated values:	13	5
Required values according to class:	$\geq 10$	$\geq 3$
Fulfilled/Not fulfilled:	✓	✓



L T I L E D . C O M  
N O R T H A M E R I C A  
K S D I S T R I B U T O R

Street 1 / Valuation Field Roadway 2 / Isolines (E)



Values in Lux, Scale 1 : 188

Grid: 10 x 6 Points

$E_{av}$  [lx]  
16

$E_{min}$  [lx]  
13

$E_{max}$  [lx]  
20

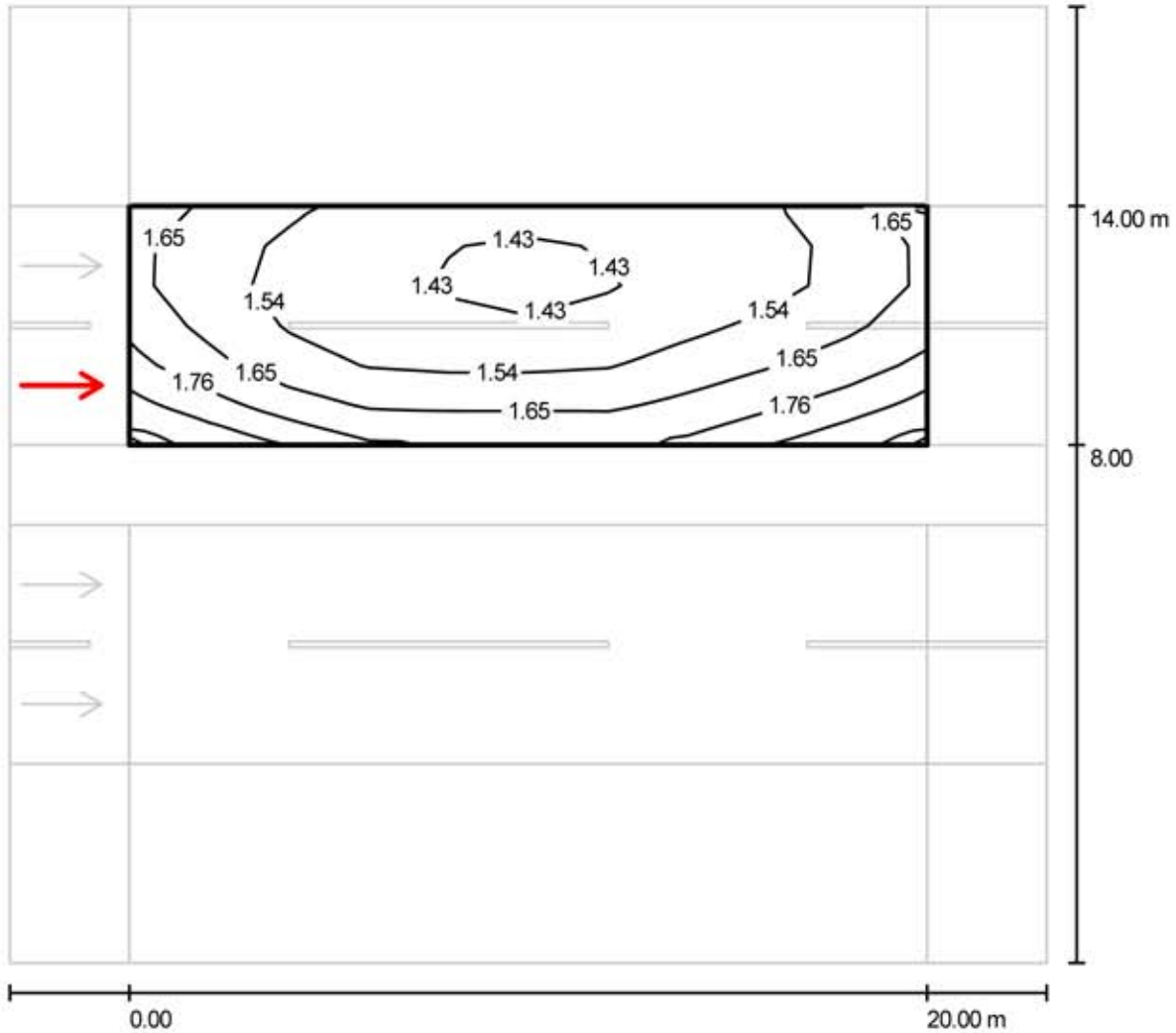
u0  
0.814

$E_{min} / E_{max}$   
0.654



LTILED.COM  
NORTH AMERICA  
KS DISTRIBUTOR

Street 1 / Valuation Field Roadway 2 / Observer 3 / Isolines (L)



Values in Candela/m<sup>2</sup>, Scale 1 : 188

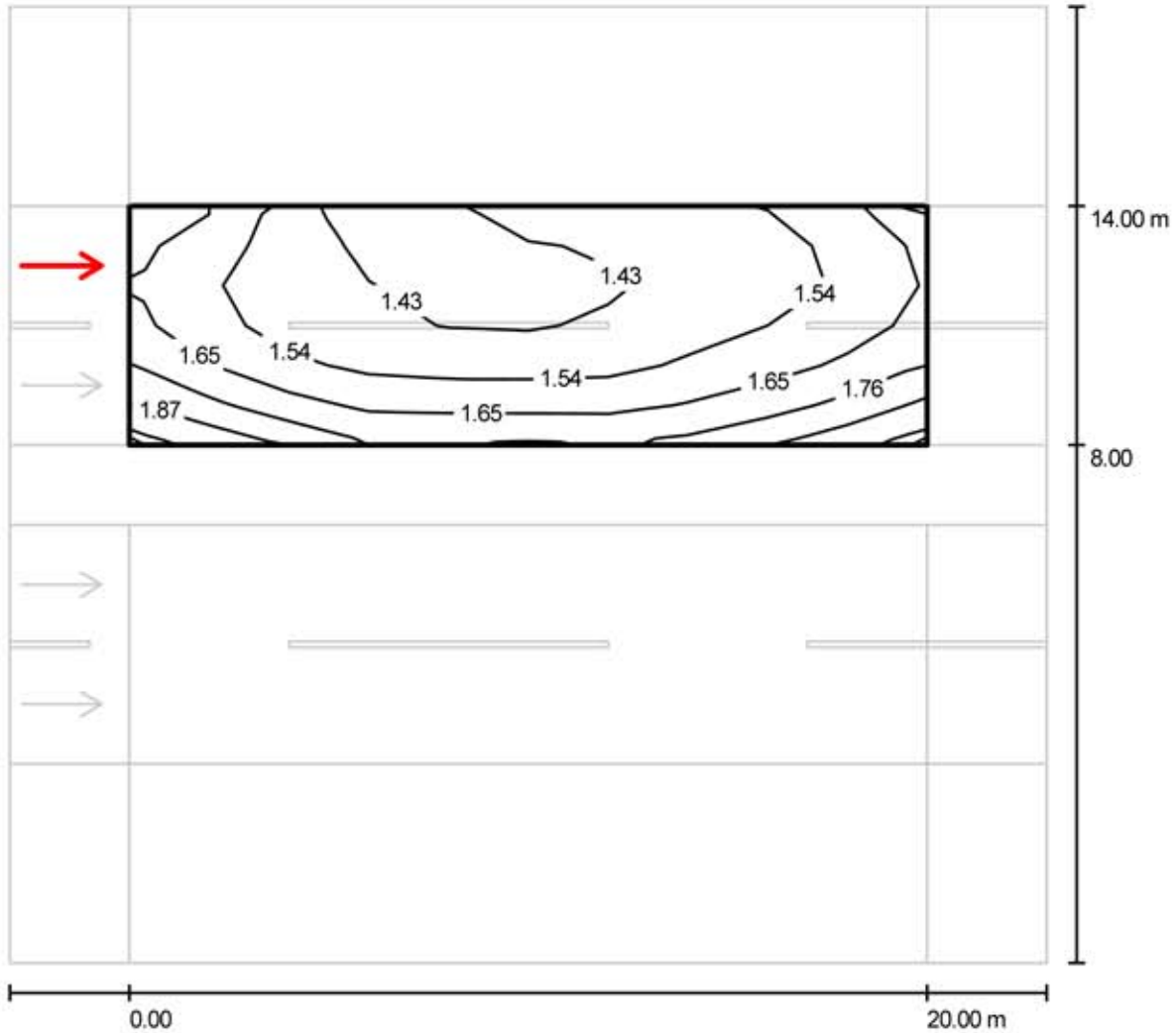
Grid: 10 x 6 Points  
Observer Position: (-60.000 m, 9.500 m, 1.500 m)  
tarmac: R1, q0: 0.100

	$L_{av}$ [cd/m <sup>2</sup> ]	U0	UI	TI [%]
Calculated values:	1.6	0.9	0.9	7
Required values according to class ME2:	$\geq 1.5$	$\geq 0.4$	$\geq 0.7$	$\leq 10$
Fulfilled/Not fulfilled:	✓	✓	✓	✓



LTILED.COM  
NORTH AMERICA  
KS DISTRIBUTOR

Street 1 / Valuation Field Roadway 2 / Observer 4 / Isolines (L)



Values in Candela/m<sup>2</sup>, Scale 1 : 188

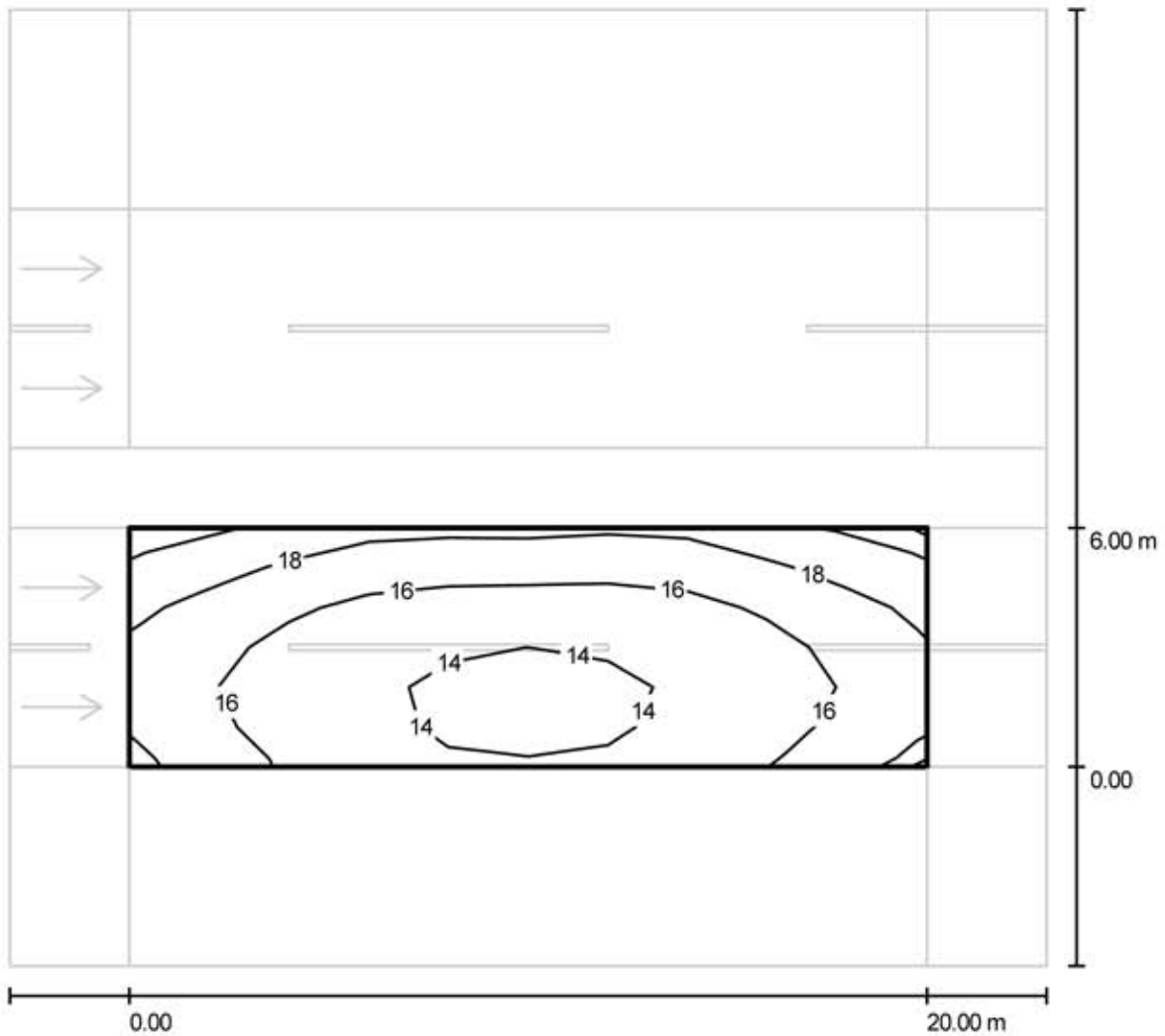
Grid: 10 x 6 Points  
Observer Position: (-60.000 m, 12.500 m, 1.500 m)  
tarmac: R1, q0: 0.100

	$L_{av}$ [cd/m <sup>2</sup> ]	U0	UI	TI [%]
Calculated values:	1.6	0.9	0.9	6
Required values according to class ME2:	$\geq 1.5$	$\geq 0.4$	$\geq 0.7$	$\leq 10$
Fulfilled/Not fulfilled:	✓	✓	✓	✓



LTILED.COM  
NORTH AMERICA  
KS DISTRIBUTOR

Street 1 / Valuation Field Roadway 1 / Isolines (E)



Values in Lux, Scale 1 : 188

Grid: 10 x 6 Points

$E_{av}$  [lx]  
16

$E_{min}$  [lx]  
13

$E_{max}$  [lx]  
20

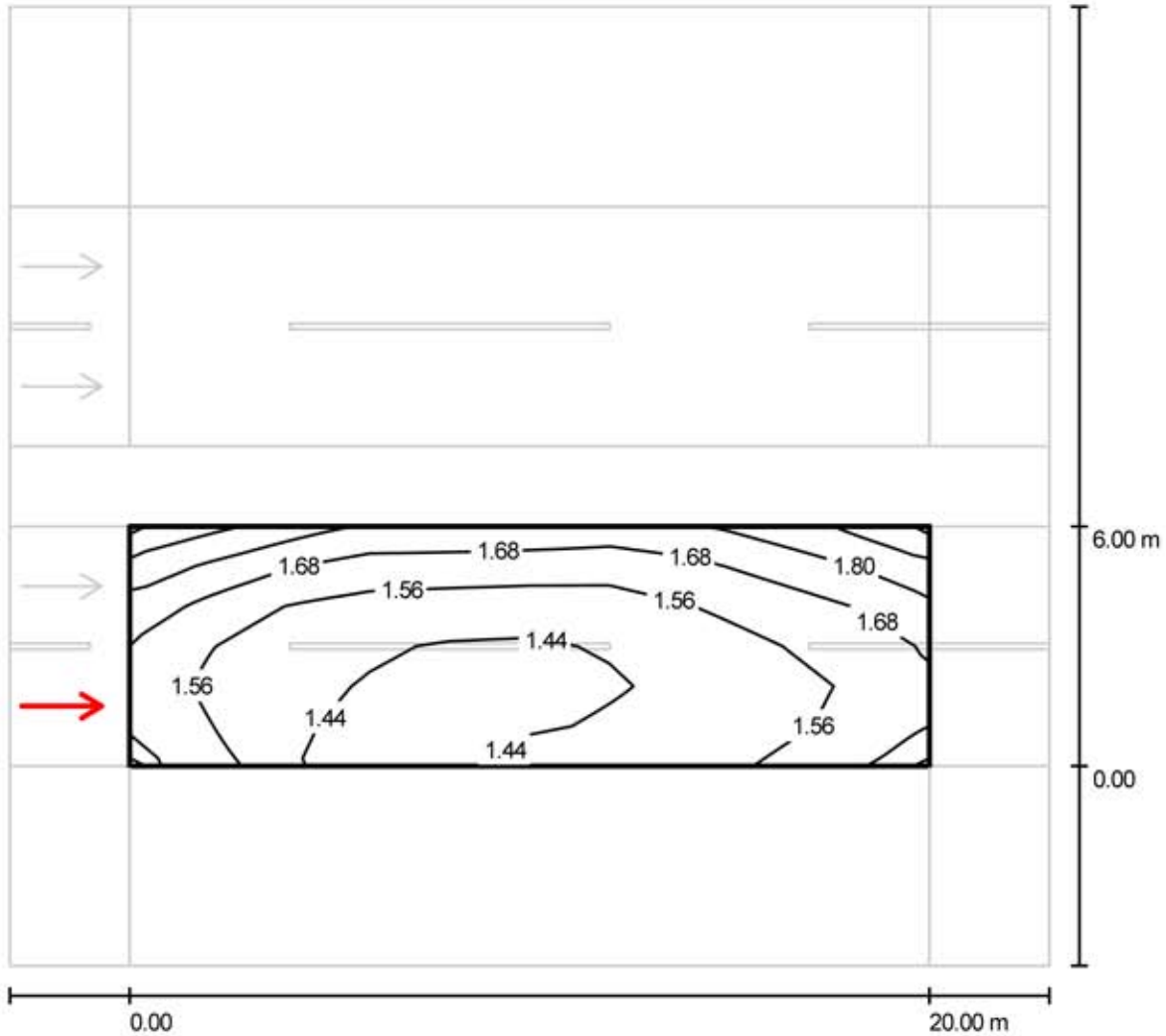
u0  
0.814

$E_{min} / E_{max}$   
0.654



L T I L E D . C O M  
N O R T H A M E R I C A  
K S D I S T R I B U T O R

Street 1 / Valuation Field Roadway 1 / Observer 1 / Isolines (L)



Values in Candela/m<sup>2</sup>, Scale 1 : 188

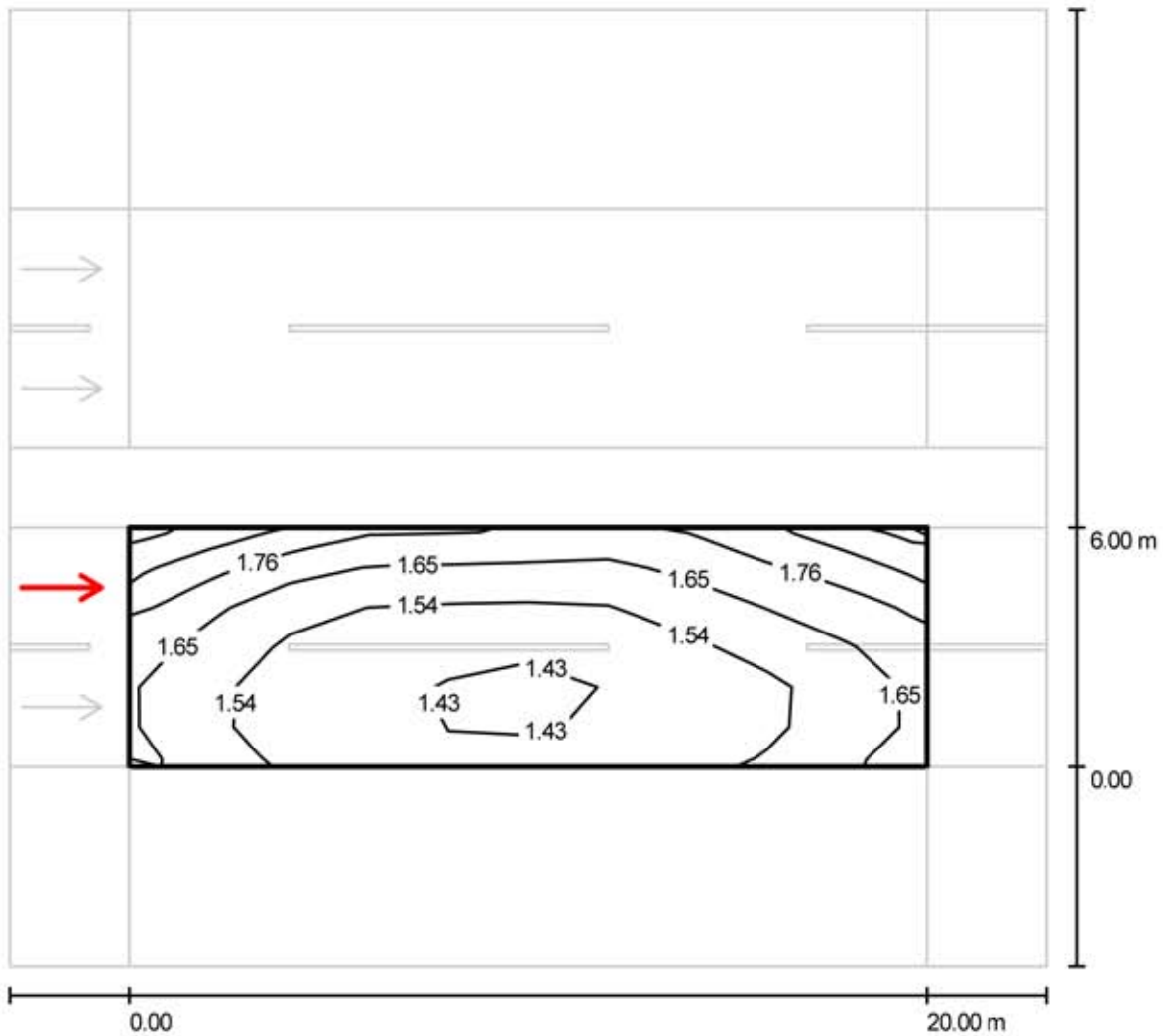
Grid: 10 x 6 Points  
Observer Position: (-60.000 m, 1.500 m, 1.500 m)  
tarmac: R1, q0: 0.100

	$L_{av}$ [cd/m <sup>2</sup> ]	U0	UI	TI [%]
Calculated values:	1.6	0.9	0.8	7
Required values according to class ME2:	$\geq 1.5$	$\geq 0.4$	$\geq 0.7$	$\leq 10$
Fulfilled/Not fulfilled:	✓	✓	✓	✓



LTILED.COM  
NORTH AMERICA  
KS DISTRIBUTOR

Street 1 / Valuation Field Roadway 1 / Observer 2 / Isolines (L)



Values in Candela/m<sup>2</sup>, Scale 1 : 188

Grid: 10 x 6 Points  
Observer Position: (-60.000 m, 4.500 m, 1.500 m)  
tarmac: R1, q0: 0.100

	$L_{av}$ [cd/m <sup>2</sup> ]	U0	UI	TI [%]
Calculated values:	1.6	0.9	0.9	7
Required values according to class ME2:	$\geq 1.5$	$\geq 0.4$	$\geq 0.7$	$\leq 10$
Fulfilled/Not fulfilled:	✓	✓	✓	✓